

# SANTANA 27 FEVER



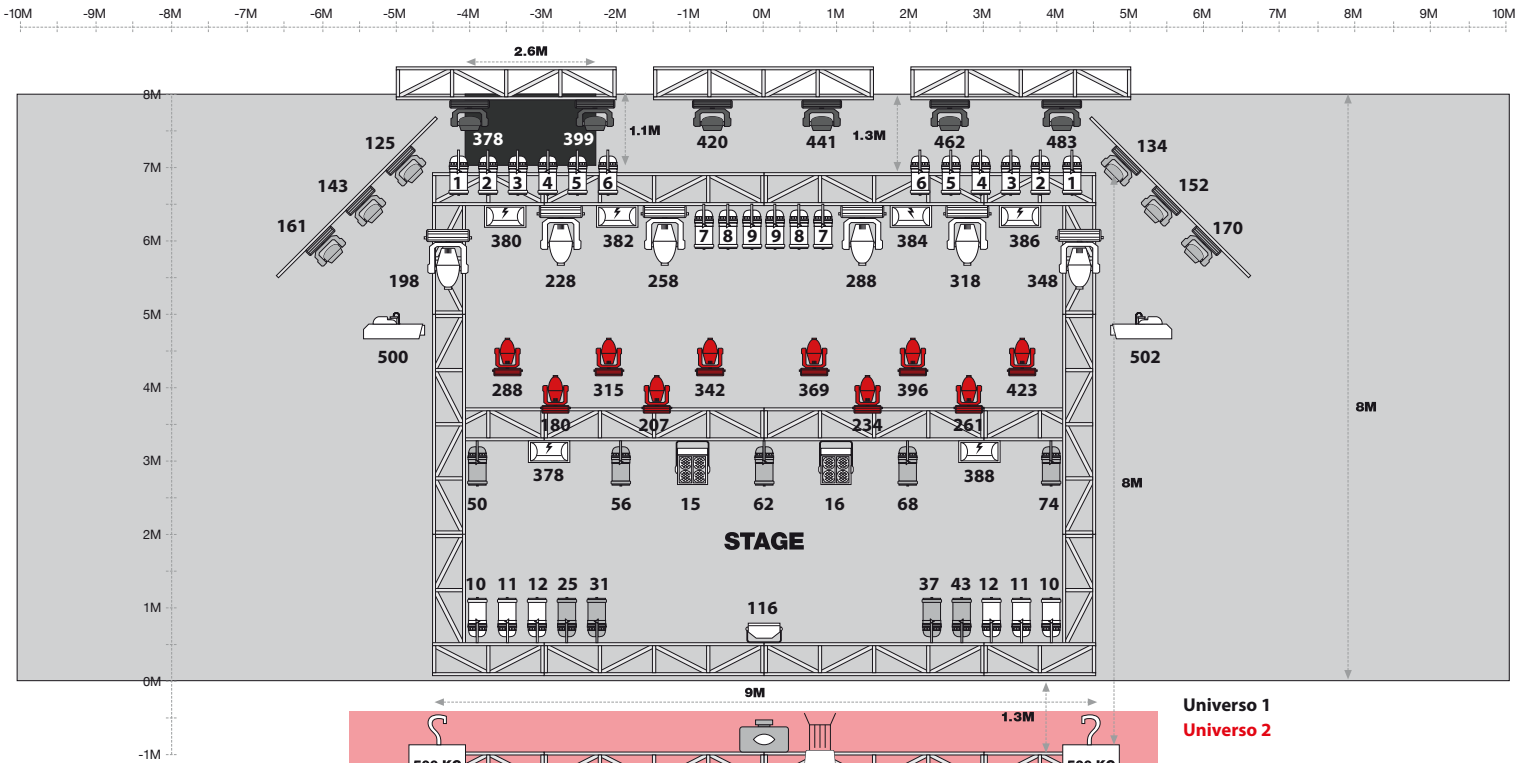
SALA GOLD  
RIDER TECNICO

santana27

fever

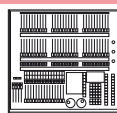
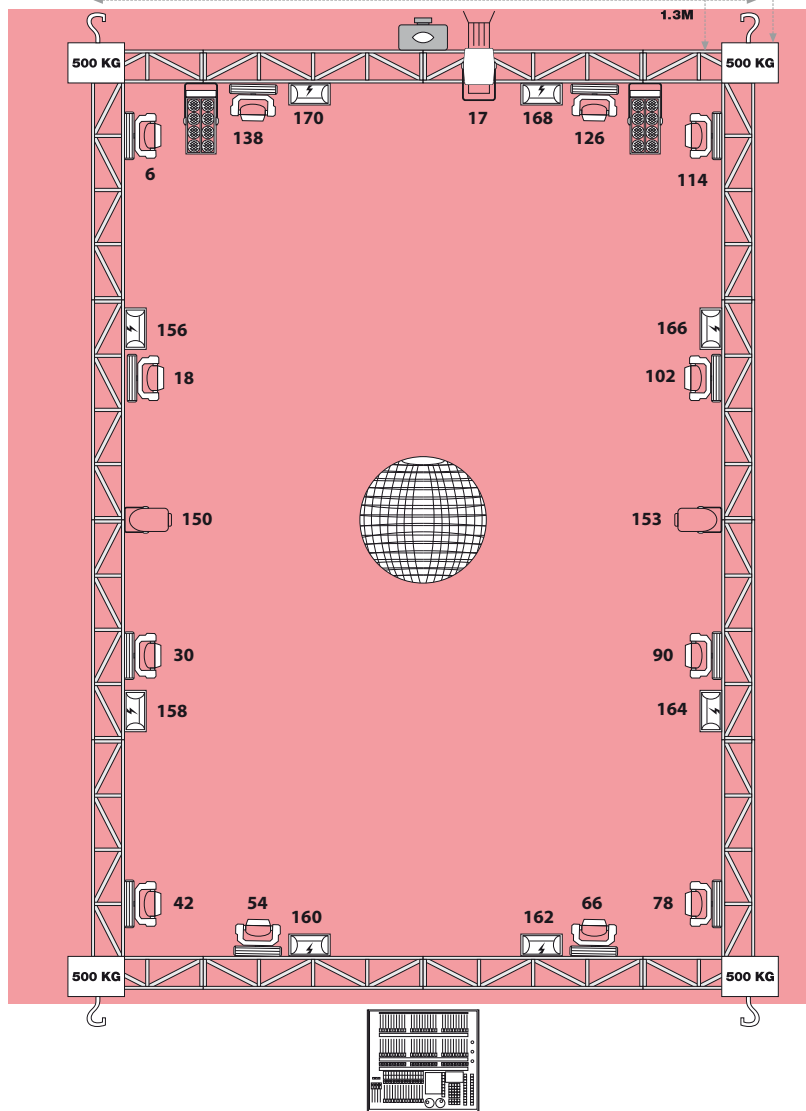


# SALA GOLD / PLANO DE ILUMINACION



Universo 1  
 Universo 2

ALTURA:  
 Escenario a techo: 5 m  
 Escenario truss: 4m





Avolite Pearl 2000



Road Hog 4 High End System



Par 64 (Conventional)



Cegadoras



Strobe 1500



Recorte 750 25°/50°



Color Change Triton Blue MF3



Proyector Led RGB Triton Blue



Par Led 136 Triton Blue (Wally)



Móvil Robe Pointe



Cabeza Móvil Mac 101 RGB



Cabeza Móvil Mac 101 RGB  
On the Wall



Móvil Robe Mini Pointe



JEM Compant HazerPro-Martin



Proyector Epson EB-Z8050W

**P.A.**

Line Array Adamson: 12 x Spektrix, 4 x Spektrix W 15°, 4 x Spektrix Sub (2 x 18"), 4 x T21 Sub (2 x 21")  
Amps: 4 x Powersoft K6, 6 x Powersoft K3, 2 x Powersoft K2  
Control: 2 x XTA Electronics DC1048

**F.O.H.**

Digidesign Profile  
Intercom

**MONITORES**

Digidesign Venue SC-48  
10 x Adamson Monitor (6 x M12 + 4x M15)\*  
Amp. 5 x Powersoft K2  
Sidefill 1 x Master Audio MAW218D + 2 x Master Audio MA210D (per side)  
Drumfill Master Audio MAW218D + 1 x Adamson M15 \*(1 of the 4x M15)

**MICROFONIA**

Shure: SM58, SM57, Beta 58, Beta 57, Beta 52, Beta 91, Beta 98Ds, Beta 98HC  
Akg: C451, D112  
Senheiser: MD 421, 606  
BSS DI  
Cableado (Van Damme Neutrik) y pies de micro Beyer Dinamic